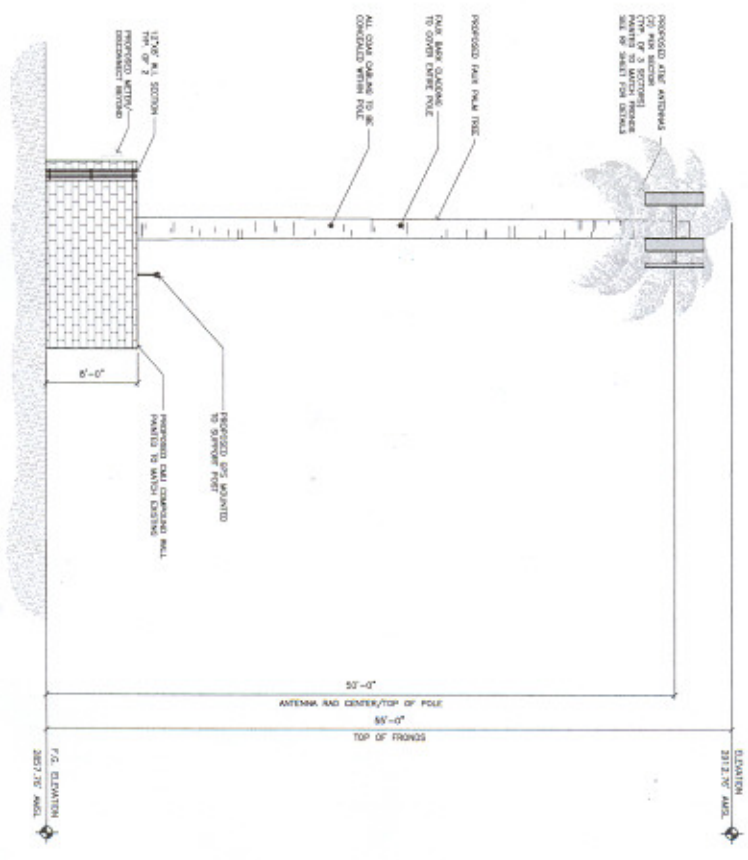


1 SOUTH/WEST LOOKING NORTH/EAST



2 NORTH/WEST LOOKING SOUTH/EAST

TOWER ELEVATIONS
SCALE: 3/16" = 1'-0"

FULL SCALE 1/4" = 1'-0"
+ FT 2 0 2 4 FT
HALF SCALE 1/8" = 1'-0"