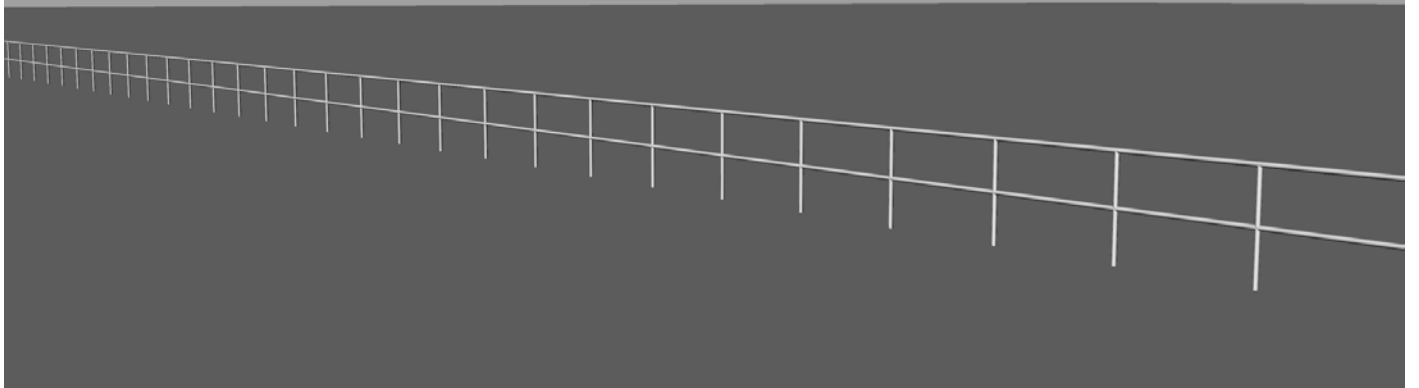


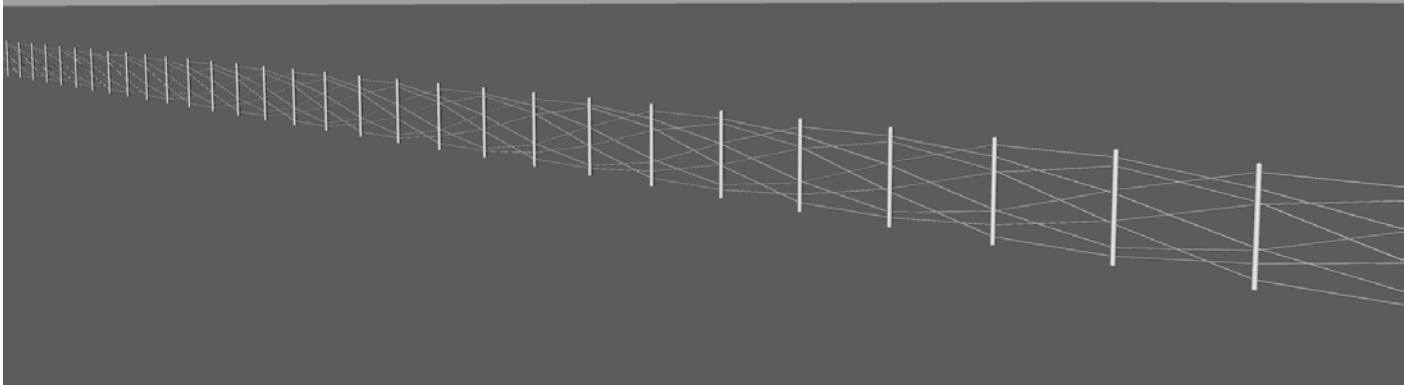
# Houghton Corridor Pedestrian Rail Concepts

The Houghton Road Corridor is 13 miles long and includes many different neighborhoods. The Public Art Master Plan recommends that an artist-designed rail replace the standard ADOT rail. This will give the entire corridor a sense of continuity. This document shows the standard ADOT rail along with some concepts developed by artist Joe O'Connell. Please share this with your neighbors, get feedback, and come to the Ward 4 CDRC meeting on Tuesday August 17 (5:30-7:30PM at the Clements Center, 8155 E. Poinciana Drive.)

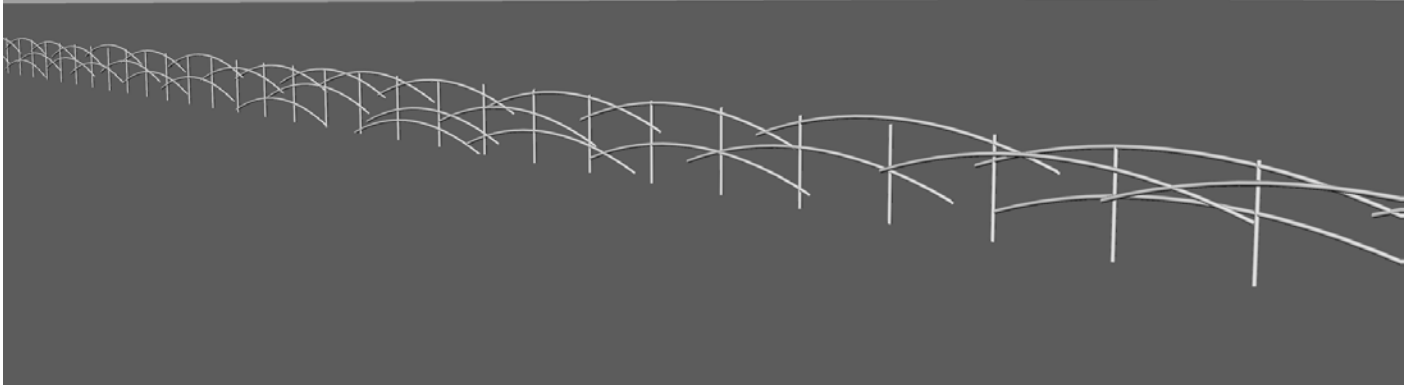
Standard ADOT Rail (shown for comparison)



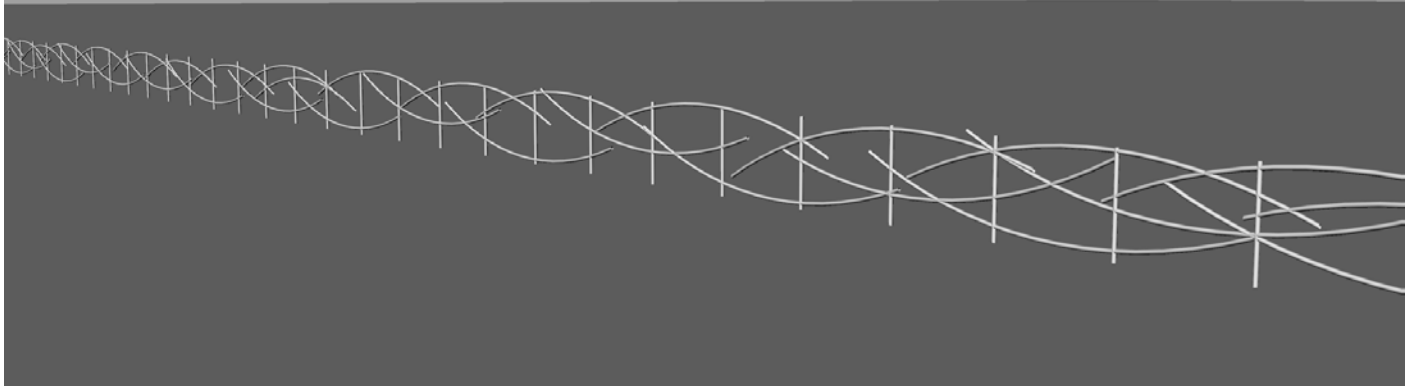
Concept 1 - Wire Rope



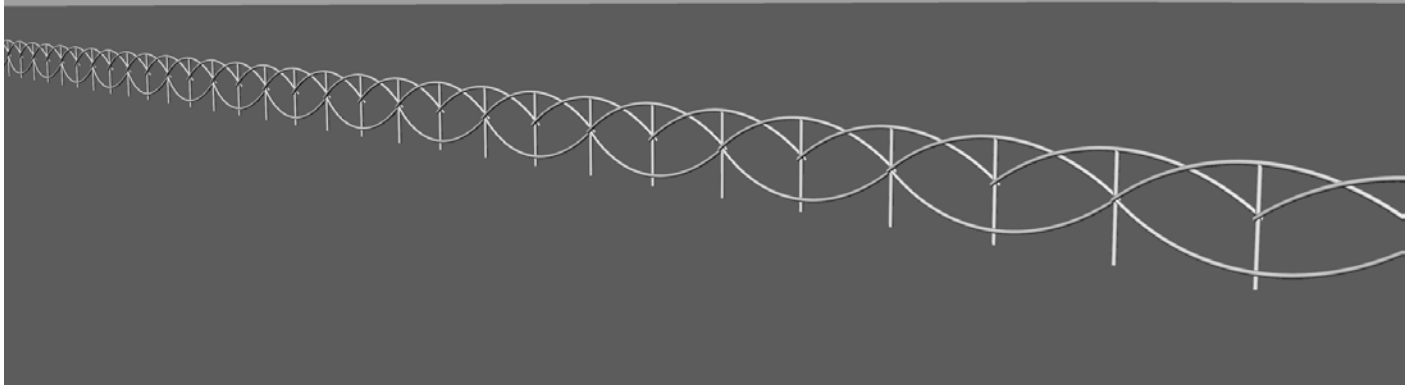
Concept 2 - Flowing Water A



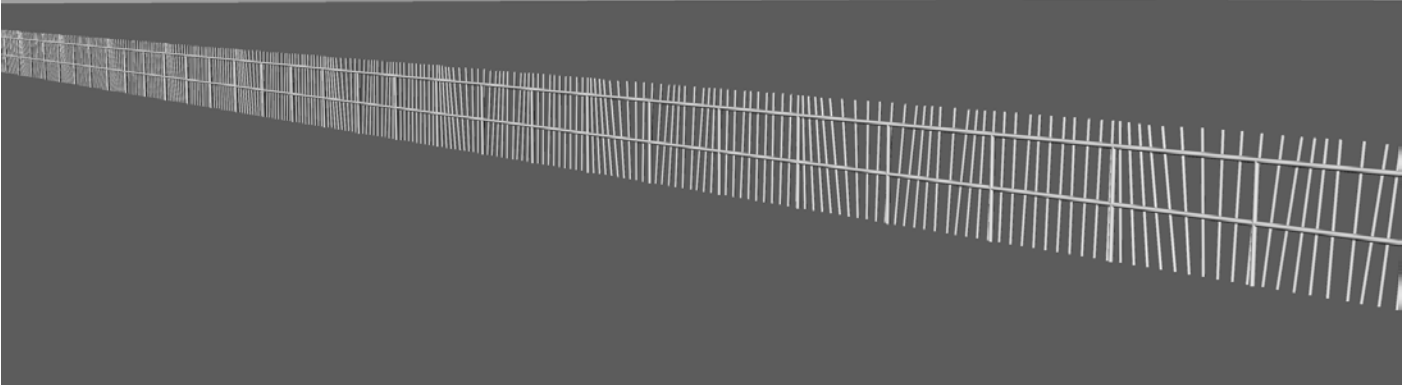
Concept 3 - Flowing Water B



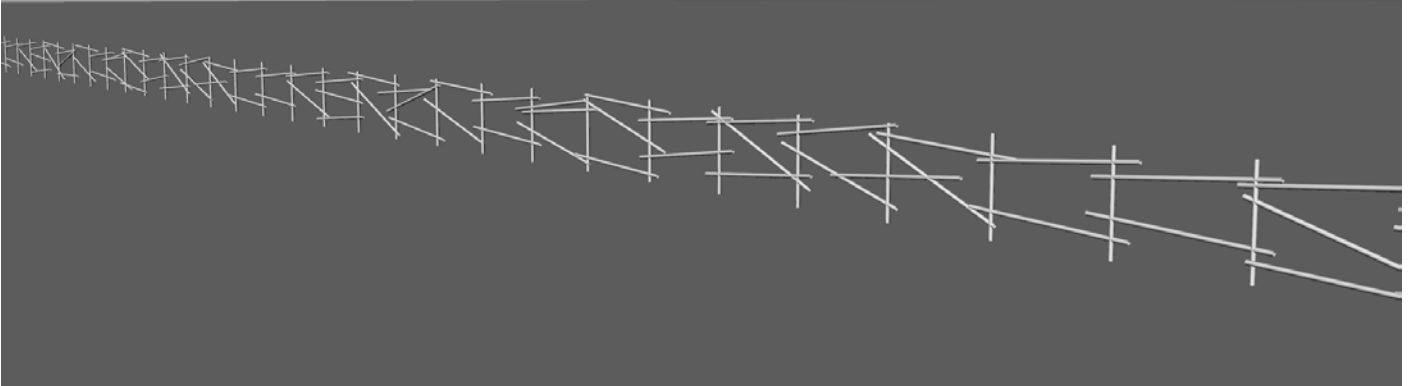
Concept 4 - Flowing Water C



Concept 5 - Waves of Grass



Concept 6 - Short Chopsticks



Concept 7 - Long Chopsticks

